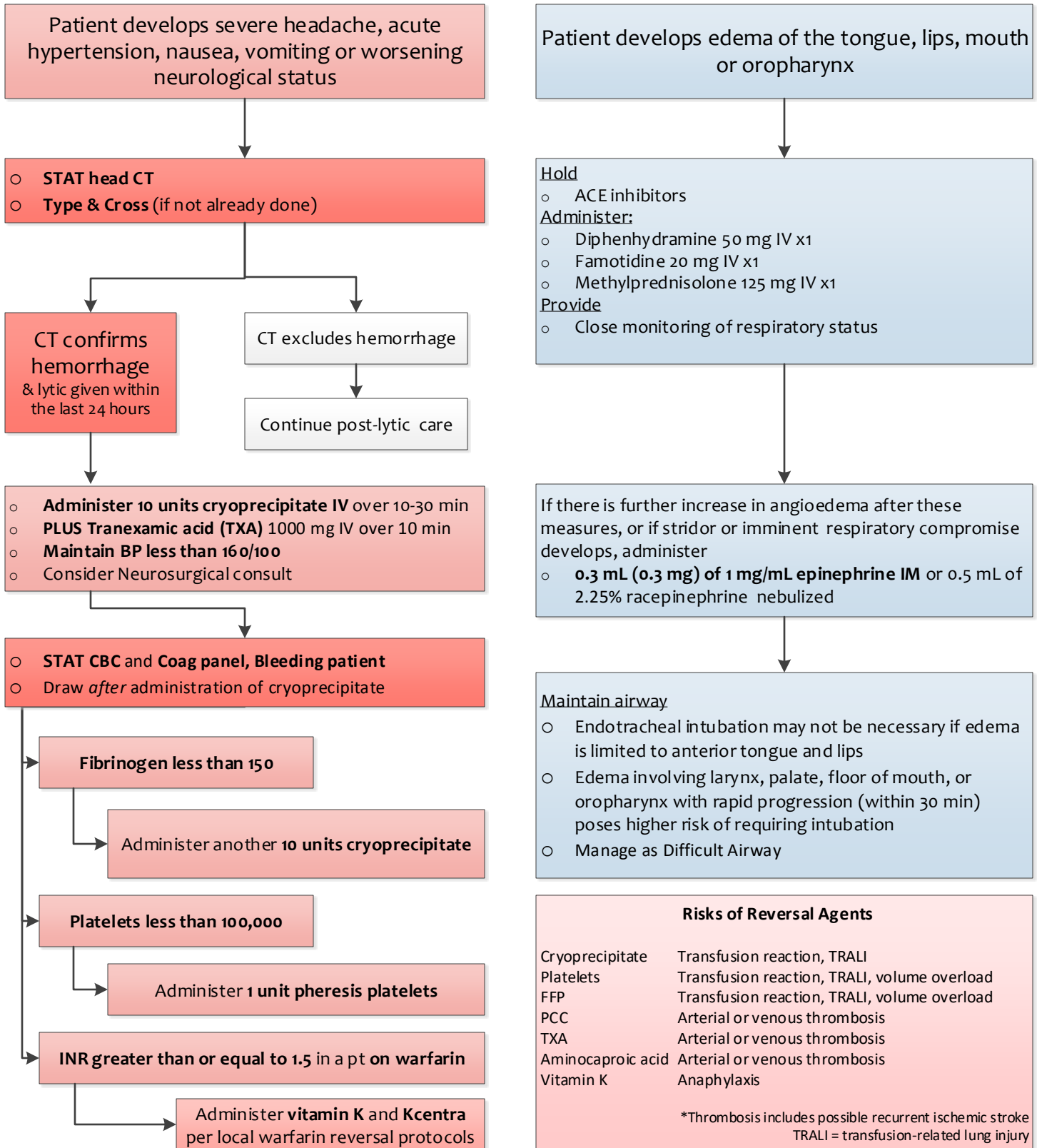


Management of Post-thrombolysis Complications

All patients treated with thrombolysis must be monitored closely for **clinical worsening** and **orolingual swelling** for 24 hours after lytic administration



Risks of Reversal Agents	
Cryoprecipitate	Transfusion reaction, TRALI
Platelets	Transfusion reaction, TRALI, volume overload
FFP	Transfusion reaction, TRALI, volume overload
PCC	Arterial or venous thrombosis
TXA	Arterial or venous thrombosis
Aminocaproic acid	Arterial or venous thrombosis
Vitamin K	Anaphylaxis

*Thrombosis includes possible recurrent ischemic stroke
TRALI = transfusion-related lung injury

References:
Guidelines for the Early Management of Patients with Acute Ischemic Stroke: 2019 Update American Heart Association/American Stroke Association. *Stroke*.2019 (12);50:e344-e418.
AHA/ASA Scientific Statement. Treatment and Outcome of Hemorrhagic Transformation after Intravenous Alteplase in Acute Ischemic Stroke.*Stroke*.2017;48e.